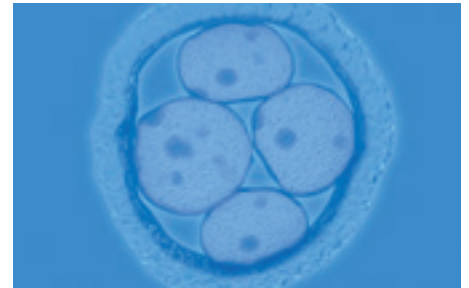


p1 **Information Regarding Your Fertility Treatment and Costs**

Thank you for choosing the UT Southwestern Fertility and Advanced Reproductive Medicine Clinic for your fertility treatment and care at this very important time.

**Estimates:**

- Estimates are based on current information and **not a guarantee** of the final charge.
- In some cases, it is impossible to calculate the final charges in advance.
- Factors involved in the actual care and treatment provided are:
  - o Specific equipment
  - o Supplies and medications
  - o Additional tests ordered by your physician
  - o Any unusual special care or unexpected conditions or complications



**Estimates include:**

- Professional charges for services performed in the clinic
- Insurance plan benefits and specifics (including your deductible, copay, co-insurance, and out-of-pocket maximums)
- Discounted self-pay rates for patients with no insurance coverage

**Not included in estimates:**

- Radiology services
- Genetic screening and/or testing
- Lab work sent to a third party
- Personal items
- Home medications
- Need for an outpatient surgical suite (rare cases)

These services will be billed separately by a third party.

We understand that treatment costs can be a stress for our patients and their family. After our physicians complete the consultation and develop a treatment plan, a member of our Patient Financial Clearance team will be available. They can help answer any questions and discuss expected costs and available financial arrangement options.

**You can contact the Patient Financial Clearance team at 469-200-2561, option 1.**

